

Model3 installation instructions

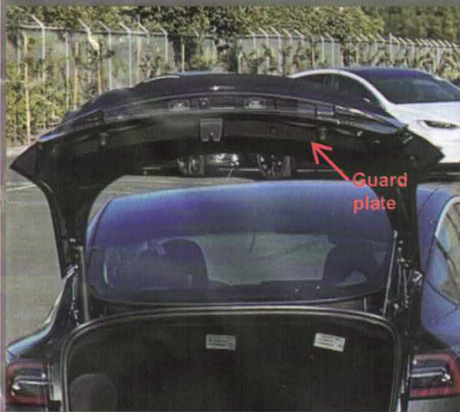
Tool

Wrench	8mm Sleeve	Rocker
		

Product picture



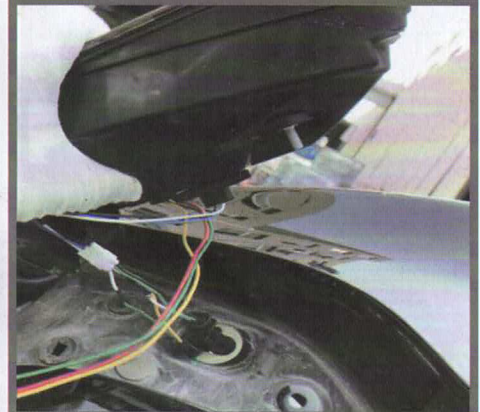
Installation instructions



1. Open the trunk and break off the guard



2. Remove the flat lamp: Unplug the connector, unscrew the screw (above), and remove the flat lamp with the rocker (below)



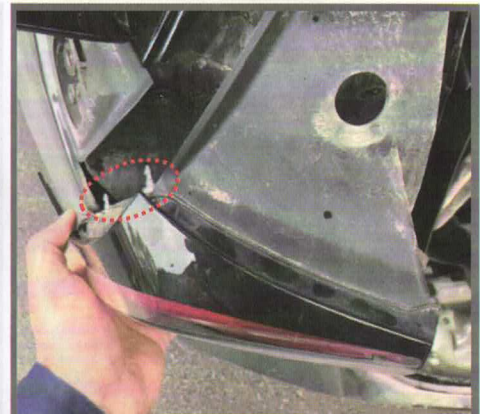
3. Replace with a new flat lamp and restore the installation screw connector



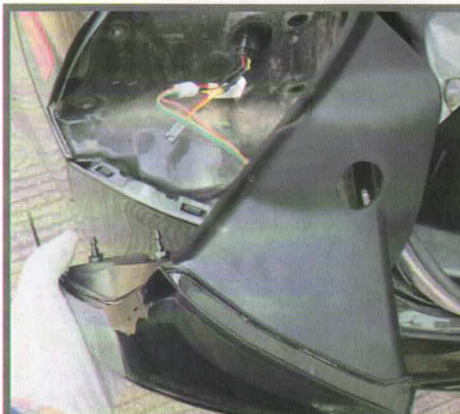
4. Remove the bending lamp: unscrew the fixing part of the bending lamp and pull out the rubber sealing strip



5. Break off the partition, remove 2 screws and unplug the connector



6. Use the prying plate to remove the set screw and then take out the bending lamp



7. Replace the new bend lamp and restore the installation screws and connectors



8. Connect the connecting wire as shown in the figure and tie it with rolling tape



9. Install and restore the right tail lamp in the same way